



# What's New in BMC FootPrints 11.5 Asset Core

BMC Footprints 11.5 delivers comprehensive, automated IT asset management that enables the discovery, configuration, management, and security of IT endpoints to help you control costs, maintain compliance, and reduce IT vulnerability and financial risks.

## Additional enhancements

- » Next-generation platform support, including Microsoft Windows 8
- » Ability to discover, deploy, troubleshoot, assess, and update Windows-embedded devices
- » Advanced diagnostics for automated root cause discovery when an asset is no longer being managed properly
- » Extended inventory data recognition for operating systems, software title normalization, and security software updates
- » More than 100 additional customer enhancement requests and fixes

## Cradle-to-grave automated IT asset management

BMC Footprints 11.5 helps you reduce your manual asset management tasks from initial imaging to end of life. Automated deployment, patch, and maintenance of operating systems, applications, and agents deliver true "set-it-and-forget-it" capabilities that ease the ongoing management of complex hardware and software asset installations.

- » Deploy or migrate large volumes of systems in a short amount of time with multi-casting
- » Quickly configure automated updates, scanning, and deployment processes
- » Recognize when a new machine comes online and auto-deploy the correct agent (OS-based) through intelligent agent deployment and management
- » Maintain compliance through automatically deployed agents

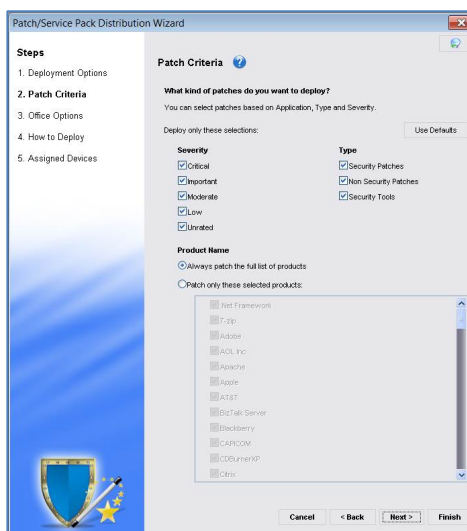


Figure 1. Easily select deployment options, patch criteria, and assigned devices for "set-it-and-forget-it" patch management.

## IT service management integration your way

With BMC FootPrints 11.5, you can intelligently integrate your asset data with either your on-premise BMC FootPrints solution or your cloud-based BMC Remedyforce solution.

- » Reduce ticket resolution time while enhancing self-service portal capabilities
- » Deliver useful, practical, customizable, out-of-the-box templates
- » Enable two-way communications for real-time actions

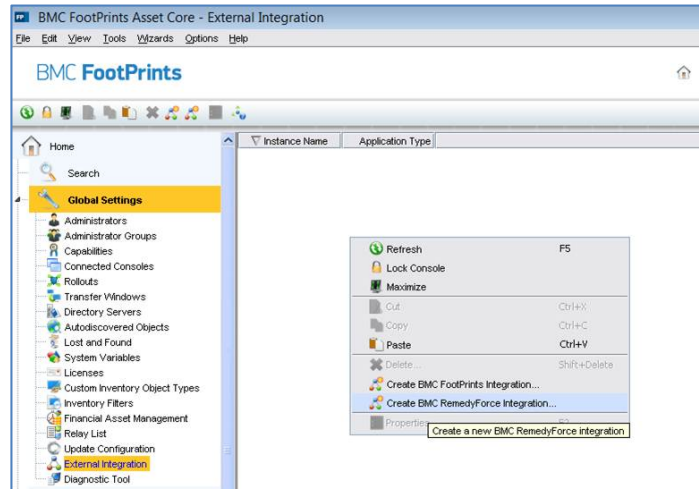


Figure 2. Quickly initiate integration with your BMC FootPrints or BMC Remydforce solution through the BMC FootPrints Asset Core console.

## Intuitive, comprehensive asset management

With an enhanced look and feel, customization options, updated Instant Expert tasks, and next-generation platform support, BMC FootPrints Asset Core improves the administration experience for customized and integrated intelligent IT asset management.

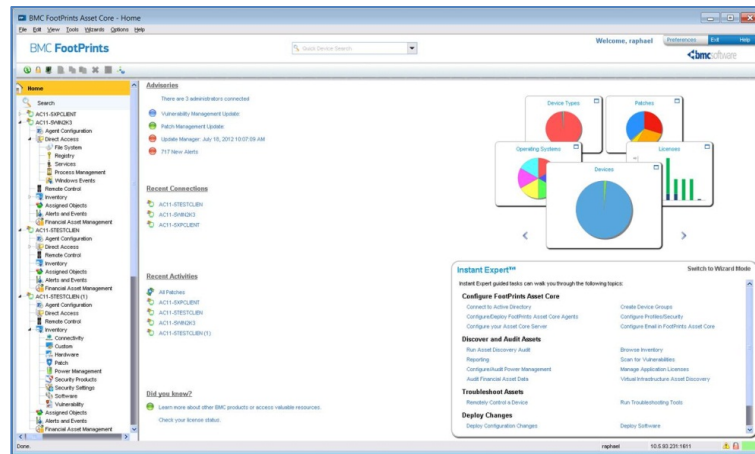


Figure 3. Easily customize the home page to showcase the data most relevant to you.

## BUSINESS RUNS ON I.T. I.T. RUNS ON BMC SOFTWARE.

Business runs better when IT runs at its best. That's why more than 50,000 IT organizations - from the Global 100 to small and mid-market businesses in over 120 countries rely on BMC Software (NASDAQ: BMC) to manage their business services and applications across distributed, mainframe, virtual and cloud environments. With the leading Business Service Management platform, Cloud Management, and the industry's broadest choice of IT management solutions, BMC helps customers cut costs, reduce risk and achieve business objectives. For the four fiscal quarters ended June 30, 2012, BMC revenue was approximately \$2.2 billion.

## Migration management

BMC FootPrints Migration Manager expands the reach for migration and desktop transformation projects.

- » Updated support for server-based user profiles (Windows Terminal Services, Remote Desktop Services, Citrix XenApp)
- » Extended profile types for migrations (local, roaming, folder redirection)
- » Conversion between profile types for quick and simple migration of users from local desktops to Remote Desktop Services environments
- » Application support for Adobe Acrobat Reader/Pro 10.x

## For More Information

To learn more on BMC FootPrints, please visit <http://www.kkc.net.au/products/footprints/bmc-footprints.html>.